

# EasyScopeX Install Guide

## 1 Before Install

### 1.1 Hardware requirement

- 1GHz or higher processor
- 200M or more hard disk space
- 1024x768 monitor resolution or above
- 256M or more RAM
- USB interface and cable
- LAN interface and cable

### 1.2 System Support

- Microsoft Windows2000, XP system
- Win7 32bit and 64bit system
- Vista 32bit and 64bit system
- Windows 8 32bit and 64bit system.

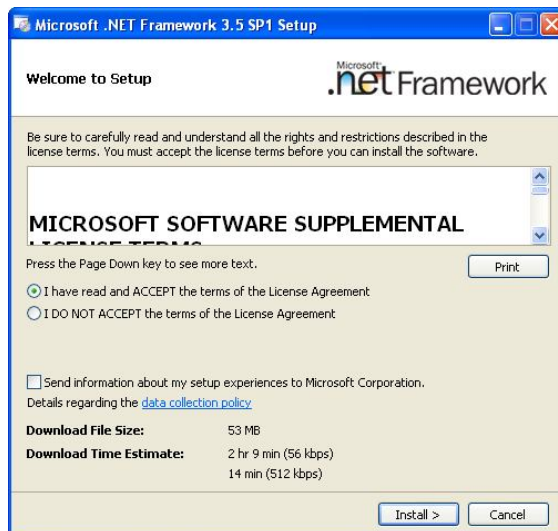
### 1.3 Software requirement

#### 1.3.1 NET framework 3.5 SP1

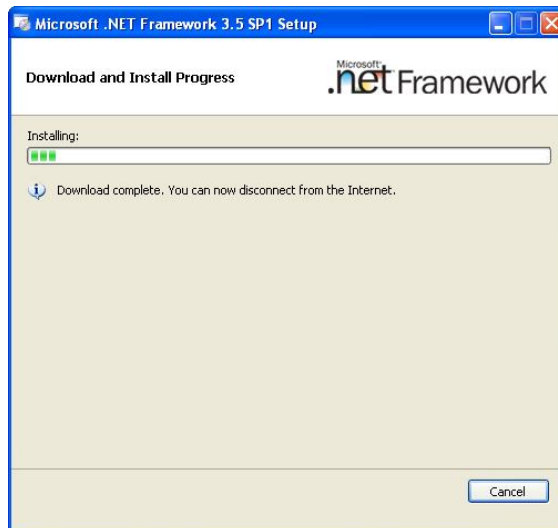
The application you are installing requires the Microsoft .NET framework version 3.5 to run. You can download the [Microsoft .NET Framework 3.5 SP1](#) package directly from Microsoft. This is a small 3 MB download with just the .NET framework installer. When you run it, the installer downloads the actual framework components that need to be installed on your computer. Once you've installed the .NET framework, you can continue installing the application.

If you plan to install version 3.5 of the .NET framework on a large number of computers, you can also download the [full package of the Microsoft .NET Framework 3.5 SP1](#). This 231 MB download comes directly from Microsoft. The small 3 MB installer likely needs to download much less than this, depending on what is already present on your computer. The install steps as below:

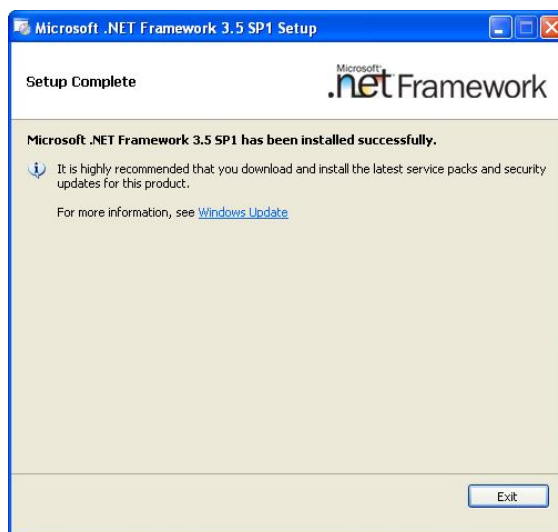
- a. Double click the dotnetfx35.exe , launch the install process, dialog as shown below:



b. Choose ACCEPT, click Install, dialog as shown below:



c. Now software setup is finished



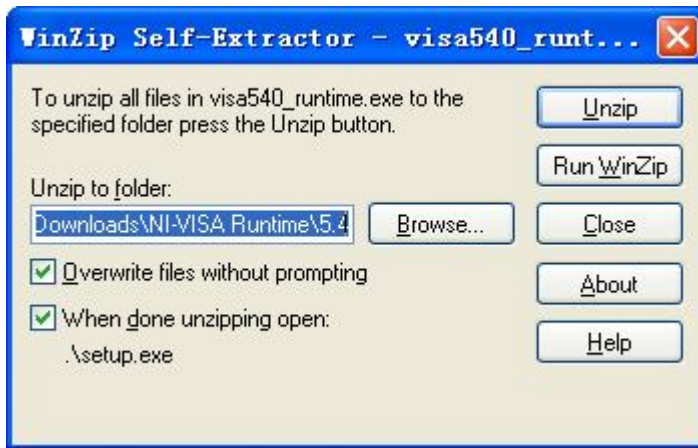
.Net Framework 3.5 was installed on the machine when installing Windows 7(64 bits) or Windows Vista(64 bits), follow next steps to use it:

- a. Open control panel, select Uninstall Program.
- b. Select Open or Close Windows Functions in the new window.
- c. Check Microsoft .Net Framework in the Windows Functions Dialog box, click OK button.

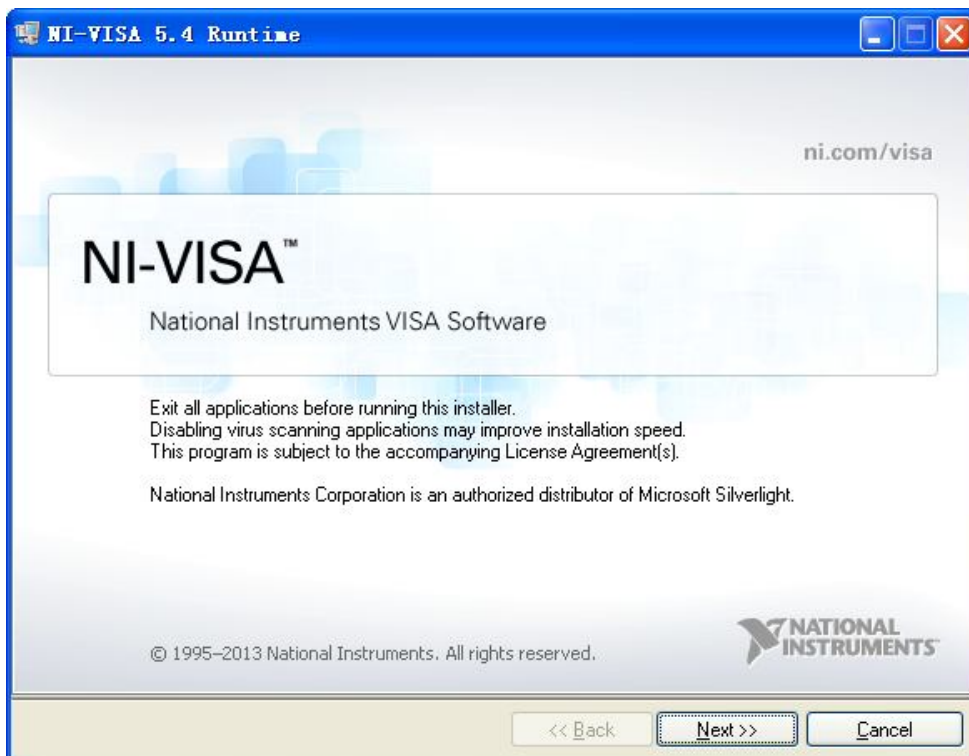
### 1.3.2 NI-VISA

Before use this application, you have to install the NI-VISA runtime library, you can find it in the installation folder or you can download it from [NI-VISA](#) web site. For example, you can download [NI-VISA Run-Time Engine 5.4](#) directly to your PC. Follow the steps below to install it:

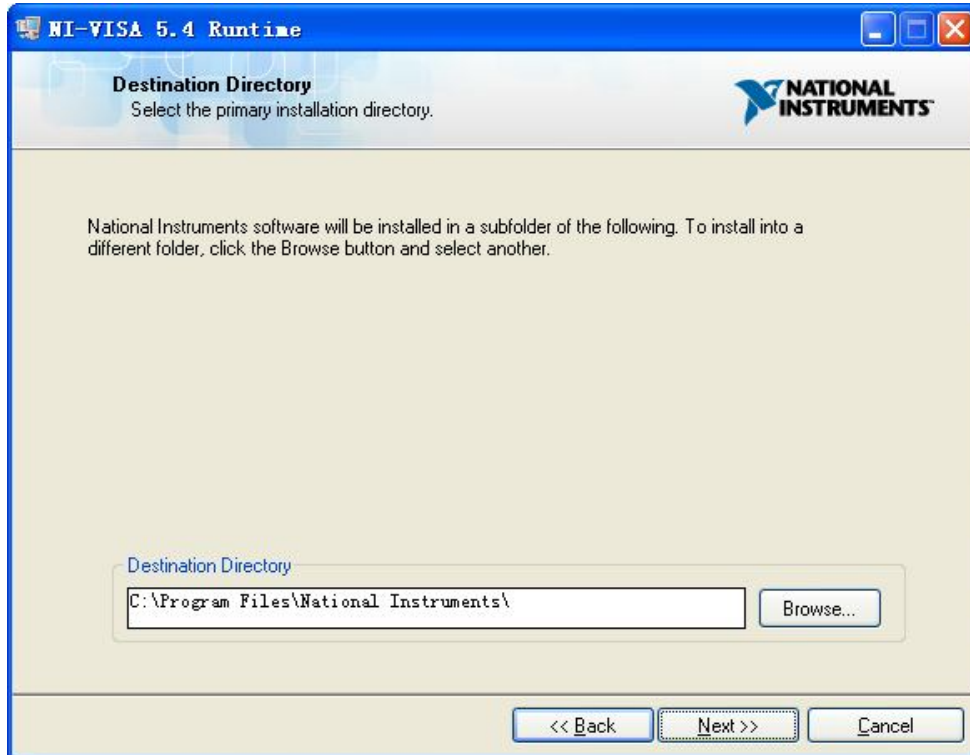
- a. Double click the visa540\_runtime.exe, dialog show as below:



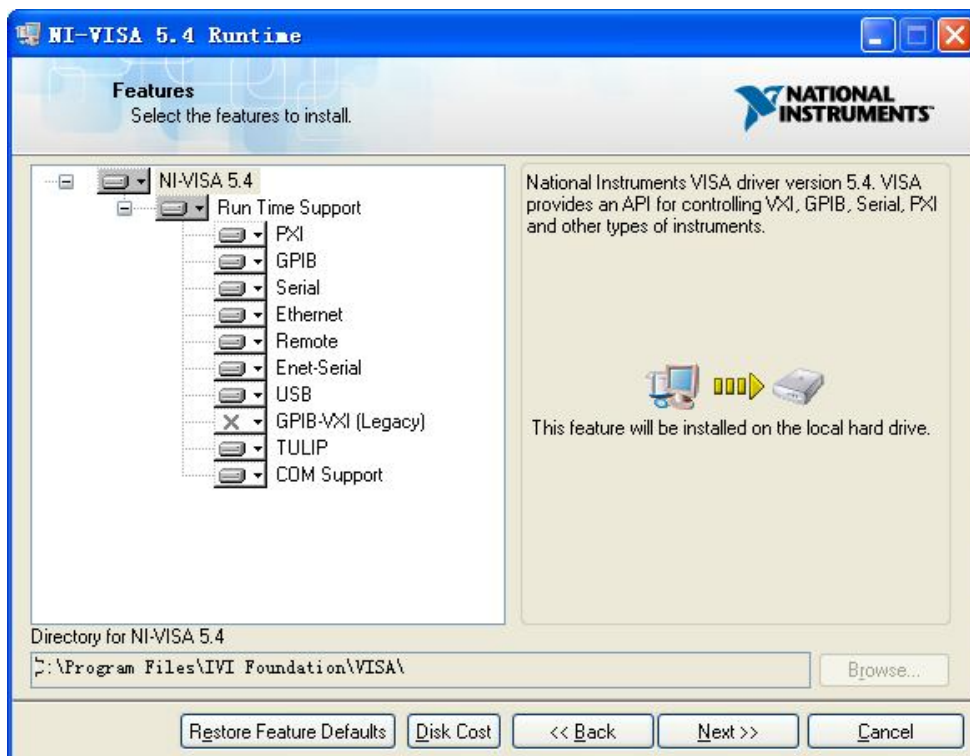
- b. Click Unzip, the install process will launch after unzipping files, dialog as shown below:



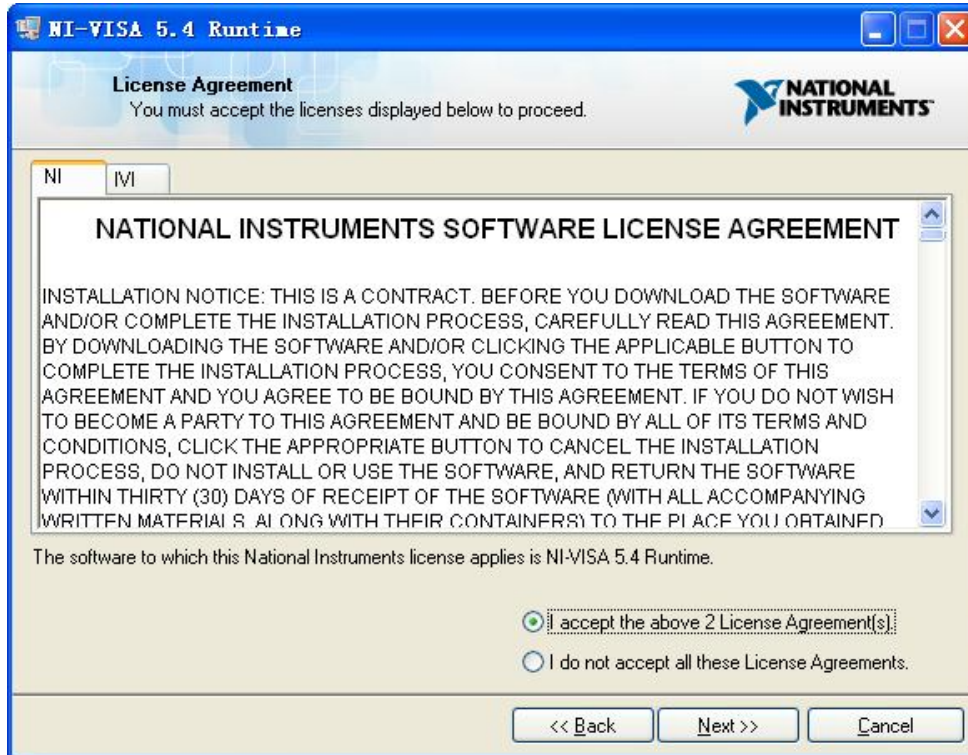
- c. Click Next, dialog as shown below:



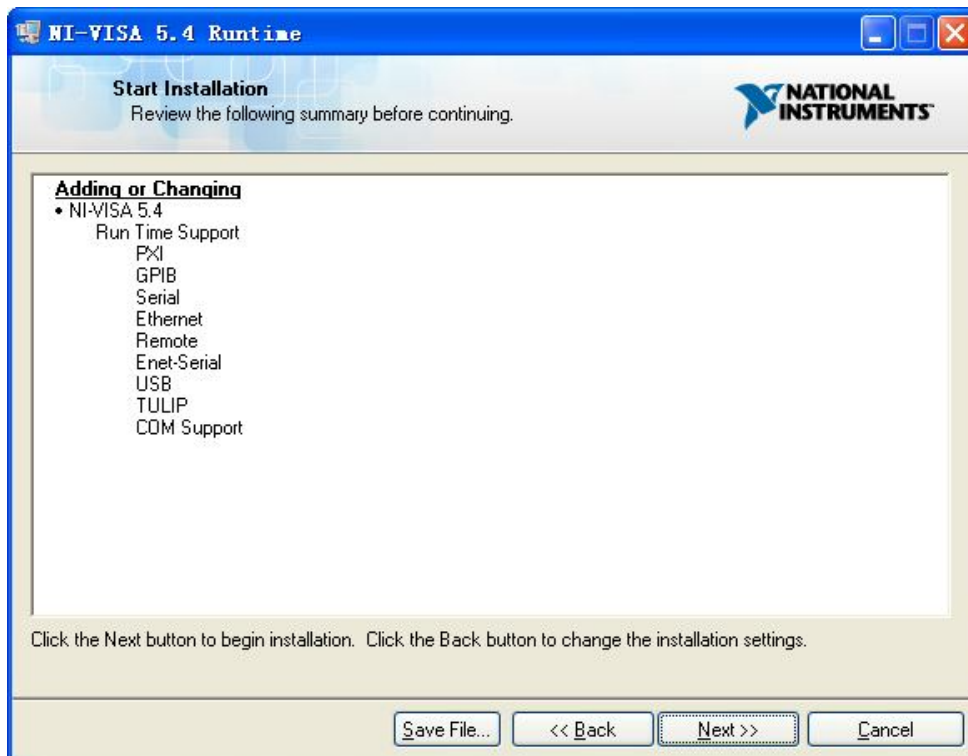
- d. Set the install path, default path is “C:\Program Files\National Instruments\”, you can change it. Click next, dialog as shown below:



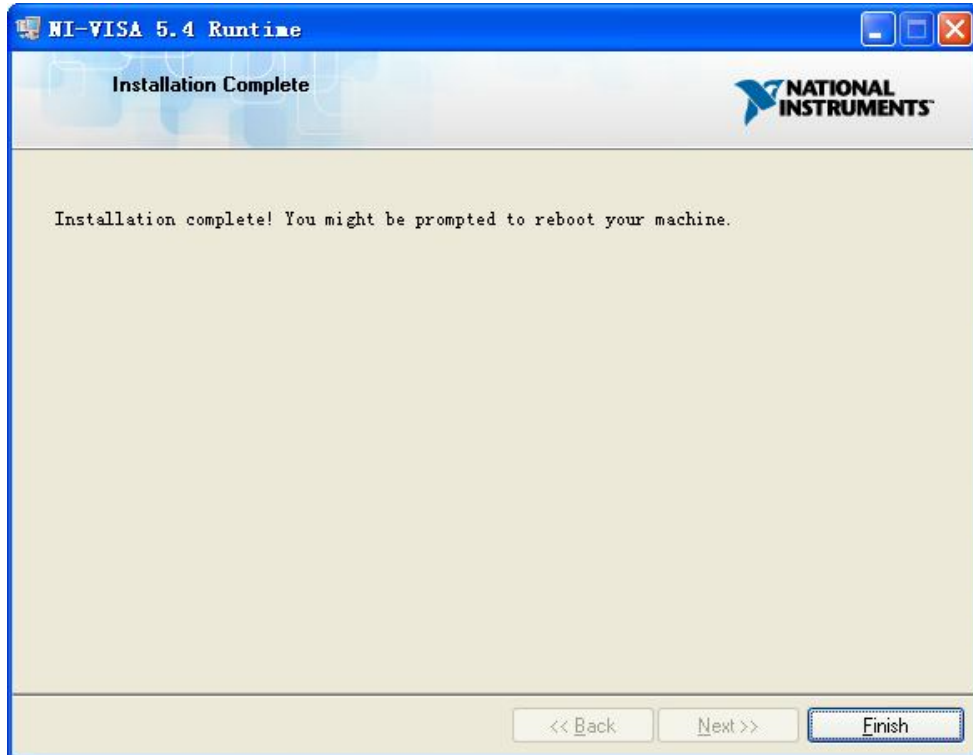
- e. Click Next twice, dialog as shown below:



f. Accept the licenses, Click Next.



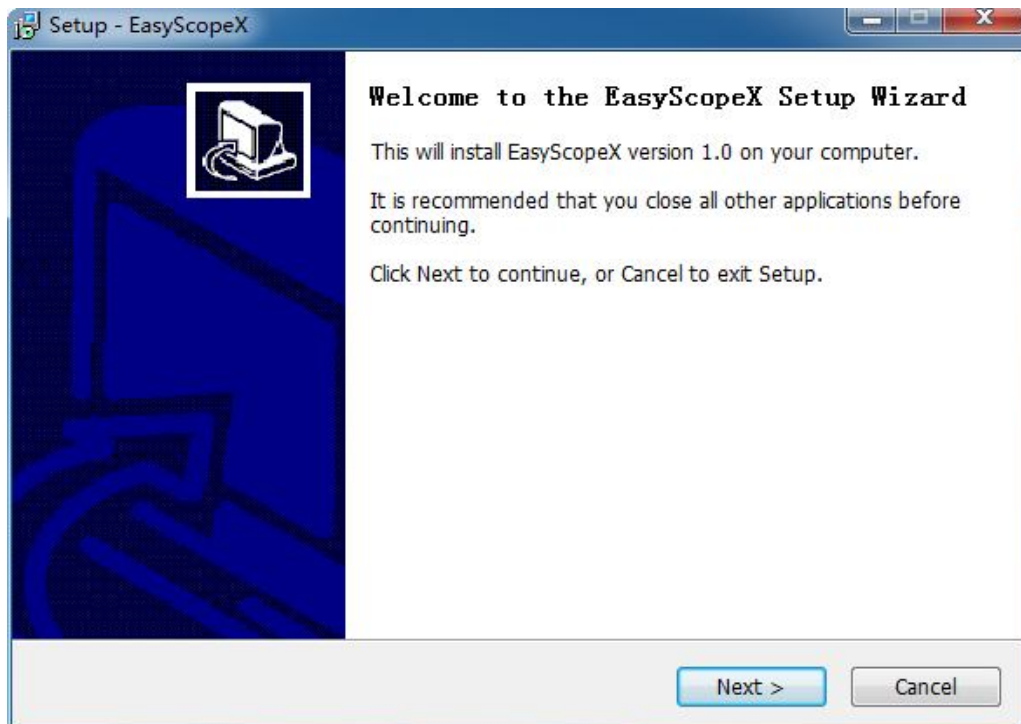
g. Click Next to begin installation.



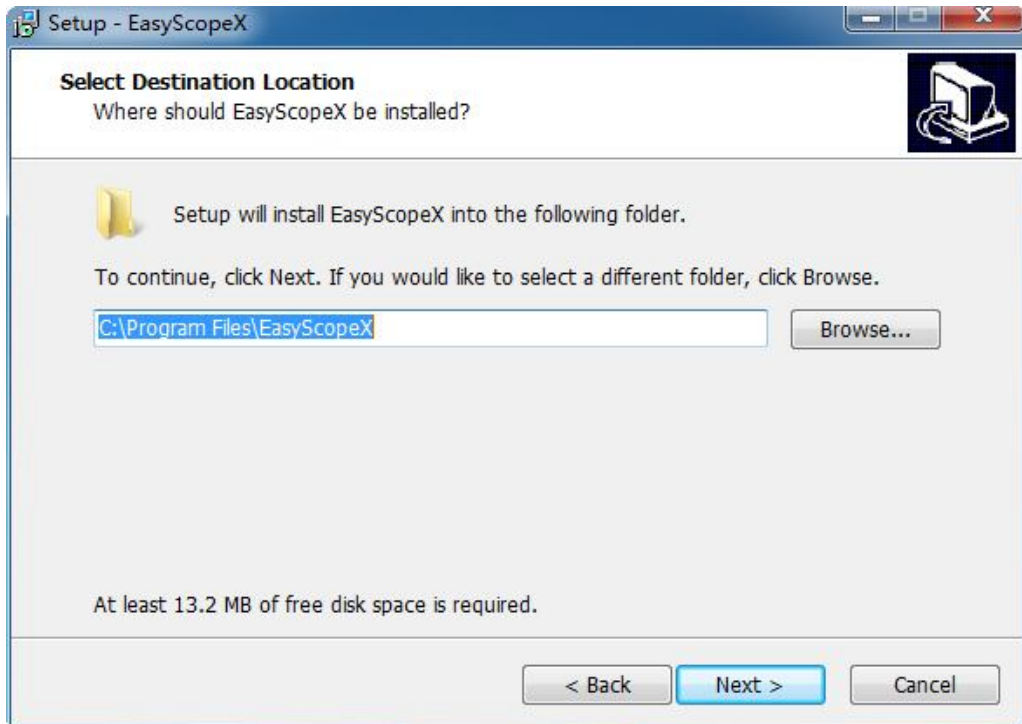
h. Now Installation complete.

## 2 Install

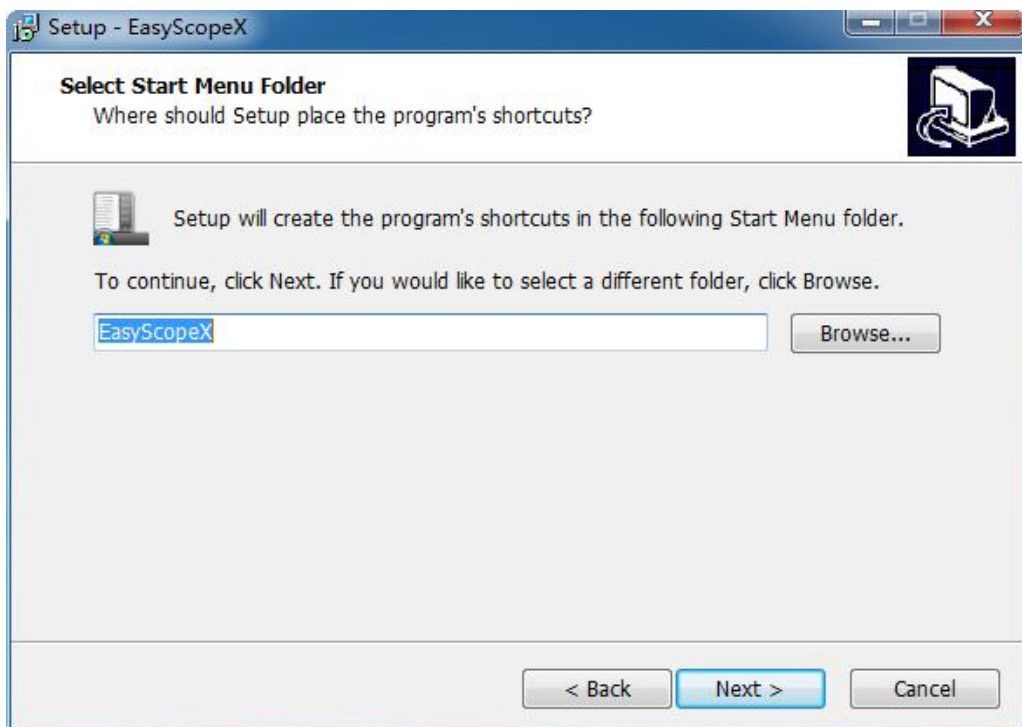
a. Double click the EasyScopeX\_setup.exe , launch the install process, dialog as shown below:



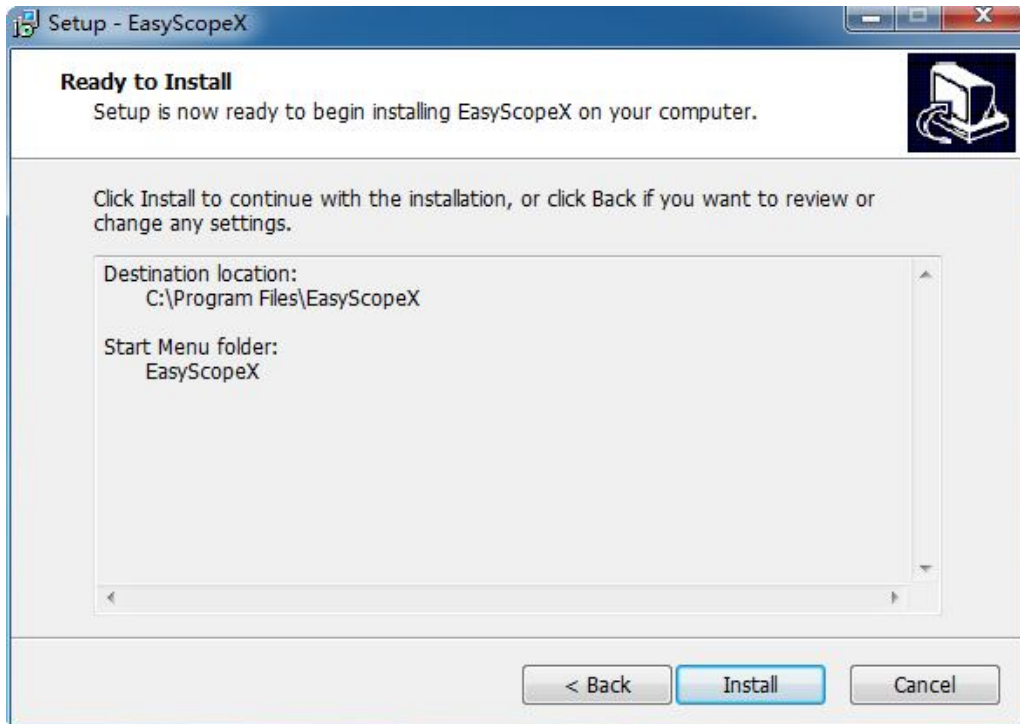
b. Click next, dialog as shown below:



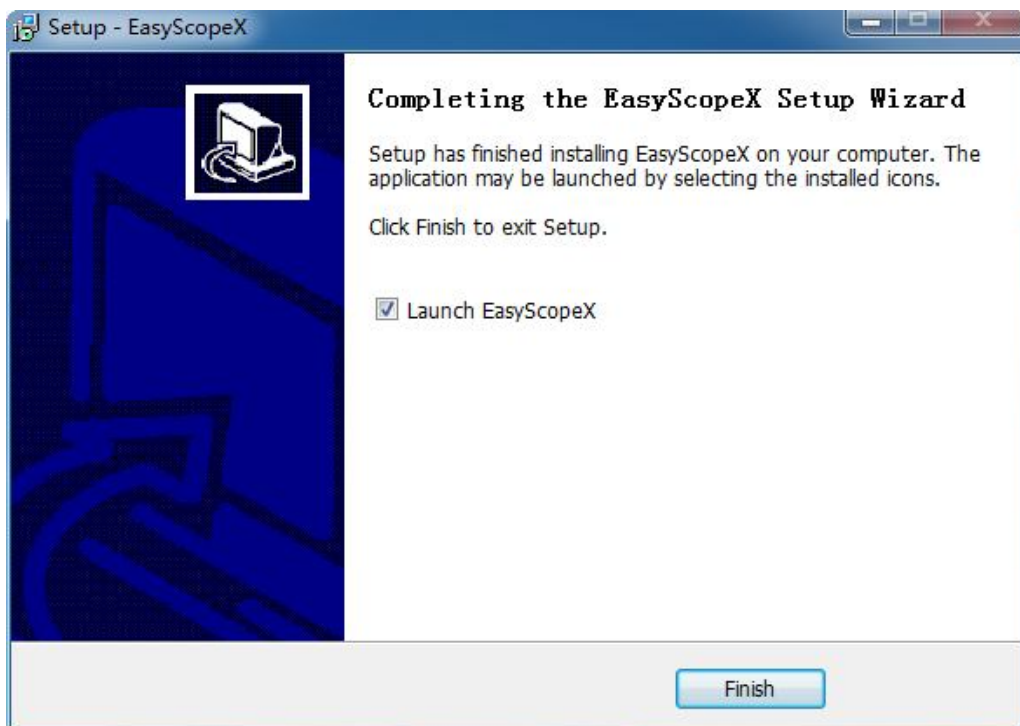
- c. Set the install path, default path is "C:\Program Files\EasyScopeX", you can change it, click next, dialog as shown below:



- d. Click next, dialog as shown below:



e. Click install, dialog as shown below:



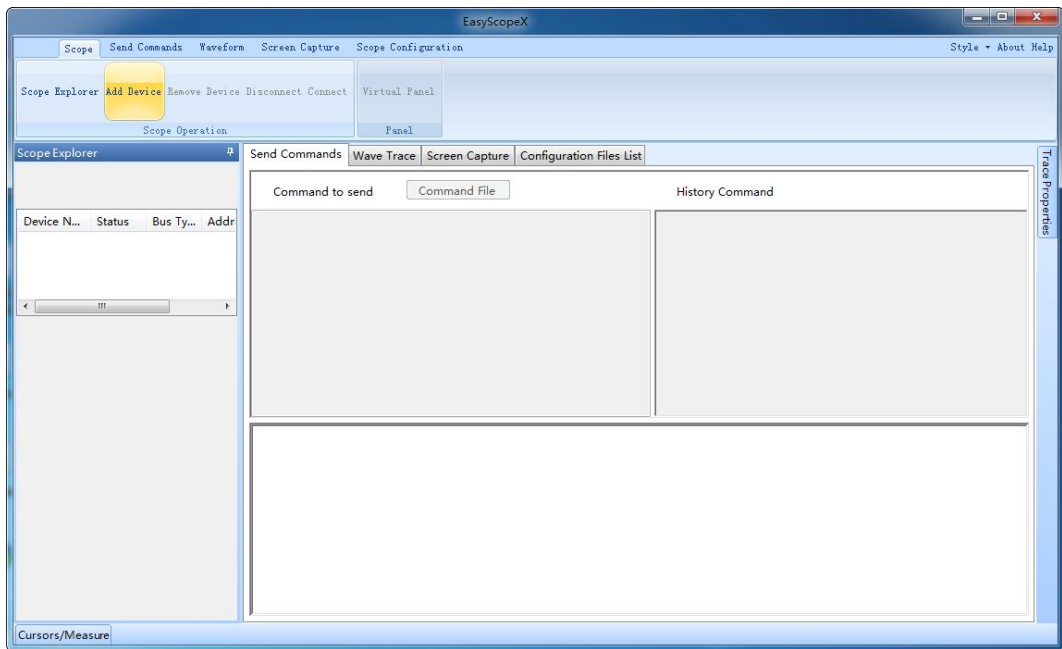
f. Now software setup is finished.

### 3 Connect Device

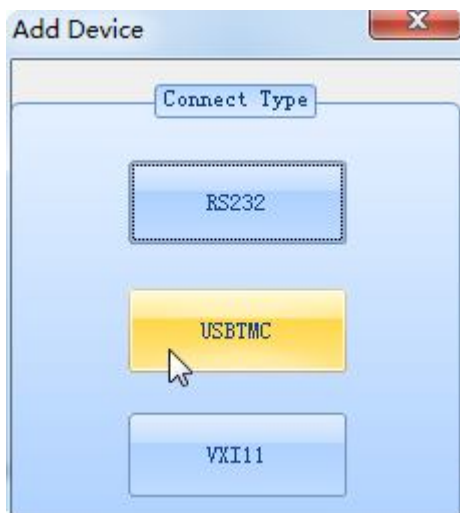
For example, connect the device with PC on USBTMC protocol.

a. Launch EasyScopeX, the application as shown below.

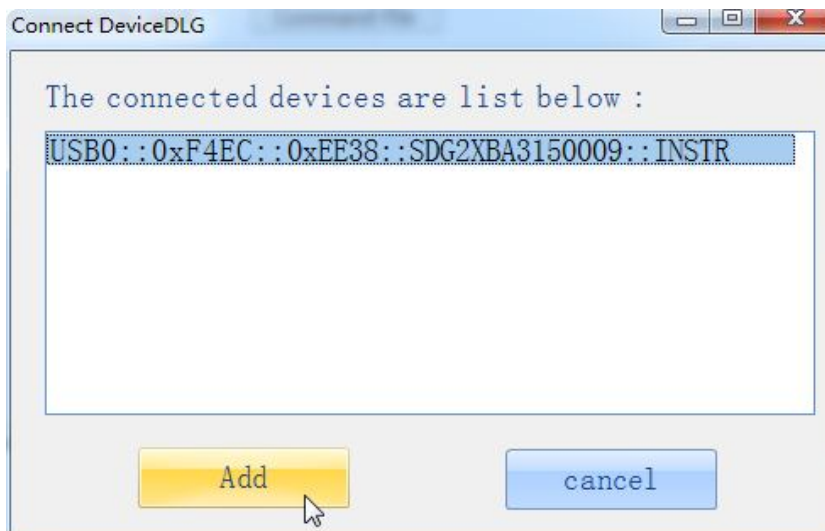




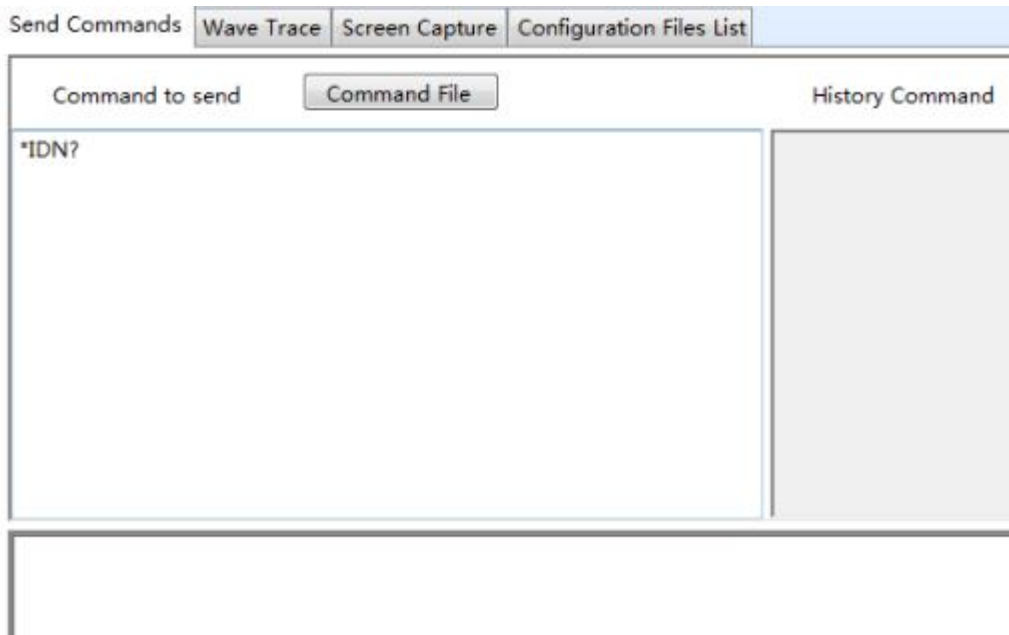
b. Click Add Device Button, the Add Device dialog as shown below:



c. Click USBTMC, the Connect DeviceDLG as shown below:



- d. Click the Add button to add it to the Scope Explorer, and you can communicate with the device in the application. Input “\*IDN?” in Send Commands text area, as below:



- e. Pressing Enter key and then get the return information, the result as shown below:

